

Parks Committee Agenda
Jefferson County
Jefferson County Courthouse
311 S. Center Avenue, Room 202
Jefferson, WI 53549

Date: Monday, December 7, 2015

Time: 9:30 a.m.

Committee members: Tietz, Augie (Chair) Christensen, Walt
Kelly, Mike (Vice Chair) Payne, Laura
Foelker, Matt (Secretary)

1. Call to order
2. Roll call (establish a quorum)
3. Certification of compliance with the Open Meetings Law
4. Approval of the agenda
5. Approval of Park Committee minutes for November 2, 2015
6. Communications
 - a. County Parks Gets Conservation Grant
 - b. Interurban Lake Country
 - c. Grant could be used to help build 10-mile bike trail from Oconomowoc to Watertown
 - d. Grant Award Gets Bike Trail Rolling
7. Public comment (Members of the public who wish to address the Committee on specific agenda items must register their request at this time)
8. Discussion and Possible Action on Crawfish River Park Plan
9. Discussion and Possible Action on Proposed Natural Materials Art Installation at Dorothy Carnes Park
10. Discussion on Cappie's Landing
11. Discussion on Glacial Heritage Area (GHA) –Friends of GHA
12. Discussion on Interurban Trail
13. Discussion on Donations Received
14. Review of Financial Statements (October, 2015) and Department Update – Parks Department
15. Discussion and Possible Action on January, 2016 Parks Committee Meeting
16. Discussion on Holzhueter Implementation Plan Process
17. Discussion and Possible Action on Snowmobile Bridge Inspection(s)
18. Discussion and Possible Action on Snowmobile Trail Crossings of the Glacial River Trail
19. Adjourn

Next scheduled meetings: Monday, January 4, 2016
Monday, February 1, 2016
Monday, March 7, 2016
Monday, April 4, 2016

A Quorum of any Jefferson County Committee, Board, Commission or other body, including the Jefferson County Board of Supervisors, may be present at this meeting.

Individuals requiring special accommodations for attendance at this meeting should contact the County Administrator 24 hours prior to the meeting at 920-674-7101 so appropriate arrangements can be made.

Parks Committee Minutes
Jefferson County
Jefferson County Courthouse
311 S. Center Avenue
Room 202
Jefferson, WI 53549

5.

Date: Monday, November 2, 2015

Time: 9:30 a.m.

Committee members: Tietz, Augie (Chair) Christensen, Walt
Kelly, Mike (Vice Chair) Payne, Laura
Foelker, Matt (Secretary)

1. **Call to order**

Tietz called the meeting to order at 9:30am

2. **Roll call (establish a quorum)**

Present: Tietz, Foelker, Christensen, Kelly, Payne

Others Present: Nehmer, Nimm, Wiesmann, Wehmeier, Ward, Bennett (JCSA), Fuller (Friends of GHA)

3. **Certification of compliance with the Open Meetings Law**

Meeting Posted According to Open Meetings Law

4. **Approval of the agenda**

Approved as written.

5. **Approval of Park Committee minutes for October 5, 2015 and October 21, 2015**

Foelker motioned to approve. Kelly seconded. Motion passes on a 5/0 voice vote.

6. **Communications**

- a. Achieves Eagle Scout – Daily Jefferson County Union 10/19/2015
- b. Mountain Bike Park in County Planned – Daily Jefferson County Union 10/15/2015
- c. Love the Chase – Daily Jefferson County Union 9/18/2015
- d. Color My World – Daily Jefferson County Union 10/2/2015
- e. The Year of the Dog - Jefferson County Living 10/9/2015
- f. Cappie's Landing – Watertown Daily Times
- g. Disc Golf Course – Daily Jefferson County Union 10/22/2015

7. **Public comment (Members of the public who wish to address the Committee on specific agenda items must register their request at this time)**

No Public Comment

8. **Discussion and Possible Action on Naming of Blackhawk Island Handicap Fishing Wharf**

Nehmer – noted that Bill Kohls, the driving force behind the Wharf, recently passed away. Nehmer asked the committee to consider naming the wharf after Mr. Kohls or a plaque in memory of Mr. Kohls at the wharf.

Wehmeier – stated the county has to consider these requests on a case by case basis and there is no set policy on naming rights. There are several policies in place; however none are specific to this situation.

Christensen – questioned whose property the wharf is a part of and suggested naming the park for natural feature(s) and have the recognition in some other form.

Tietz – suggested a plate on the pier “In Memory of”.

Nehmer – stated that department thanks volunteers by way of letters and thank you cards when donations are made. There are times that the method seems too small for the donation gift.

Wiesmann – stated that Kohls worked with Fishing has No Boundaries and he worked hard to get the funds to purchase the Wharf. The wharf is on Flood Mitigation property, not on ‘park property’. A plaque recognizing Mr. Kohl’s contributions for people with challenges is important.

Wehmeier – noted that the County is exploring ways to better recognize volunteers.

Kelly – questioned if this item should be discussed at Admin and Rules.

Christensen – motioned to recommend to Admin and Rules to seek a rule establishing the naming of parks facilities and the parks be named after natural features with recognition of individuals while investigating funding for plaques. Payne seconded. Motion passes 5/0

9. Discussion and Possible Action on Recognizing Sponsorships and Donations

Nehmer – noted that there are those who give their time and offer gifts of money for the acquisition of park property. Recent examples being the parcel adjacent to Garman Nature Preserve and the volunteer work on the Mount Bike Trails. Nehmer noted the importance of developing a policy on a quarterly or annual basis for awards to recognize donors and gifts.

Fuller – noted that the Friends of GHA could potentially sponsor an annual event/banquet on behalf of the Jefferson County Parks to recognize volunteers and donors.

Wehmeier – state that one of the goals for next year is a “state of the county” and questioned if we start recognizing individuals, businesses, etc.

Christensen – recognition could be a ‘theme’ for one of our outdoor events.

Nehmer – asked for guidance and framework for various recognition opportunities.

10. Discussion and Presentation on Building a Mountain Bike Park

Wiesmann – noted that he worked with IMBA to inventory the property for design and is waiting for final design and layout. The Green trail (easy) is the main trail. Blue (intermediate) trails have been started. Black (fast) trails to be in two sections. Developing trails takes time to measure slopes, preliminary flag slopes for correct slope percentage. One mile has been flagged, with 1/8 mile actually built. Work for the remaining of the year is weather dependent.

11. Discussion on Holzhueter Farm Conservation Park Implementation Plan Process

Nehmer – noted that the public comment period has concluded. Two comments received, one by each neighbor. DNR will meet with Parks staff in November to review and discuss. Parks staff will come back to the committee with guidance from the state and discuss how to proceed. Mr. Wise is questioning the access and easement.

Ward – noted that the intersection at the Island Road and the private property. The question was who owns the road. Ward indicated that the Wise’s own the road and the agreement states that the County/State can use the road to get to the (park) land not owned by the Wise’s. DNR is using, but if the use of the road or easement changes from when the easement was created there is a need to review. The easement was not created for public use to serve the park. Agreement that created the use of the road, the owners of parcel cannot oppose.

Tietz – asked why can’t we put a road next to the ‘drive’?

Kelly – noted that there are two sides of the park, and questioned how individuals would get across to each side.

Morrow – noted that there are metes and bounds descriptions of the (three easements).

Nehmer noted that he will get Real Estate, Grant, and Legal from DNR to discuss.

12. Discussion on 2016 County Conservation Aids for Garman Nature Preserve

Nehmer noted that the grant award came quickly and was more than requested. Work has begun.

13. Discussion on Donations Received for Garman Nature Preserve

Nehmer noted that the checks are in from the donating parties at \$28,000 each.

14. Discussion on Glacial Heritage Area (GHA) –Friends of GHA

Payne stated that she met with Fuller and Carlson on 10/23 for a nature walk.

Fuller noted that the Friends are working with Natural Resources Foundation on organized field trips to help raise money for the parks.

15. Discussion on Fundraising for Interurban Trail

Nimm noted that she recently received a check for \$1,000 from the Oconomowoc & Watertown Rotary. The clubs worked together to host the Watermelon Triathlon as a fundraiser for the trail. Nimm also noted that the department received a check for \$700 from Share the Road in Watertown. Share the Road held a Light up the Night ride as a fundraiser for the trail.

Tietz – noted that City of Watertown talked about the Trailhead plan for the Rotary’s donation. Tietz questioned if the City of Watertown could take responsibility for the trail portion from Humboldt (in Watertown) east to

HWY E. Tietz talked with Julie Simmons at We Energies. We Energies noted that the County has the long-term lease and that the County could sublease to City of Watertown for that section of the trail.

16. Review of Financial Statements (September 2015) and Department Update – Parks Department

Nehmer noted the year is winding down. All looks good. Purchases have been made and he noted some savings. The department is utilizing a temporary employee in the office to help until the Administrative position is filled.

17. Adjourn

Christensen noted that Anne Drefel approached him regarding an art install project at Jeff Co Parks and requested the item be a December agenda item.

Christensen motioned to adjourn at 10:39am. Foelker seconded. Motion passes on a 5/0 voice vote.

Respectfully Submitted,

Mary Nimm, Program Assistant

County Parks gets conservation grant

WATERLOO — The Jefferson County Parks Department has received notice from the Wisconsin Department of Natural Resources that it has been awarded a \$2,350 County Conservation Aids Grant.

The grant will be used to remove invasive and non-native woody vegetation in order to promote the growth of native grasses and forbes at the Garman Nature Preserve. Target species will include removal of buckthorns, honeysuckle and euonymus alatus (burning bush).

Other target species for removal will include garlic mustard, dames rocket, and Virginia creeper.

The Garman Nature Preserve is a wooded hillside park within the City of Waterloo. Steep topography on the west side of the park levels out at the top of the hill where 22 Indian Mounds are found.

The woods include oak, hickory, maple and cherry species. Some pines and spruce were planted at one time within the woods and along the north edge.

The entrance to the park is located on Fox Lane off of Highway 19 and McKay Way in Waterloo.

Get out and ride

Watertown-Oconomowoc bike trail needs donations to become reality

By Eric Oliver
Enterprise Staff

WATERTOWN — Lake Michigan and Watertown are 53 miles apart, but that isn't stopping the Jefferson County Parks Department and a county supervisor from trying to connect the two.

Jefferson County Parks Director Joe Nehmer and Jefferson County Supervisor Augie Tietz are trying to make the Jefferson County Interurban Recreation Trail a possibility.

"There has been success in the past (concerning bike trails) that we've noticed east of Oconomowoc and, quite frankly, we are quite envious of it because (Oconomowoc) has an extensive network of trails that takes you all the way down to Lake Michigan," Nehmer said.

The proposed 11-mile trail will run from Watertown to Oconomowoc following the We Energies right of way corridor. The trail will extend the network of trails west to Watertown and will provide connections to the Glacial Drumlin, Glacial River and Wild Goose state trails, according to a pamphlet.

The trail will cost \$5.1 million total, but the Parks

Department is splitting it into three segments, each one adding a new portion of the trail.

The department is taking the segmented approach because of a previous unsuccessful fundraiser. The first phase is \$1.5 million and despite a series of grants and fundraising commitments, Nehmer isn't sure if they can complete the entire segment. Construction could begin as early as next year. That said, he isn't stopping until the trail is a reality.

"We don't plan to give up on this until it's done," Nehmer said.

The Parks Department is actively seeking out grants and donations from members of the community, businesses and various organizations. Parties interested in donating should contact the Parks Department by calling 920-674-7452 or by visiting the county website.

Nehmer said the trail has been talked about since 1978, but no leads were ever taken until Tietz.

"A big driving force behind this is Augie Tietz," Nehmer said. "He is a long-time community leader, a city council member and County Board member. ... He is a tremendous motivator and cheerleader for the project. He is tireless in his

efforts to try and do this for the citizens of Watertown."

Tietz laughed and said he could be considered the project's champion.

His interest in the trail started when he was a child when he saw the city's interurban train tracks. As he grew up the trains abandoned the tracks and the corridor lay vacant.

"A lot of my friends always asked me why we couldn't make a bike trail out there," Tietz said.

So he looked into it. Tietz brought the idea up to the county and they liked it. He suspects the trail will be complete in a number of years, but the trail building efforts require one pivotal thing; money.

Tietz isn't letting a lack of funding stop him, though. He was in talks with We Energies to allow the city of Watertown to open up the first segment of the trail and let the city take it over and temporarily use it for walking and casual biking. He expects to have a decision by the end of the month.

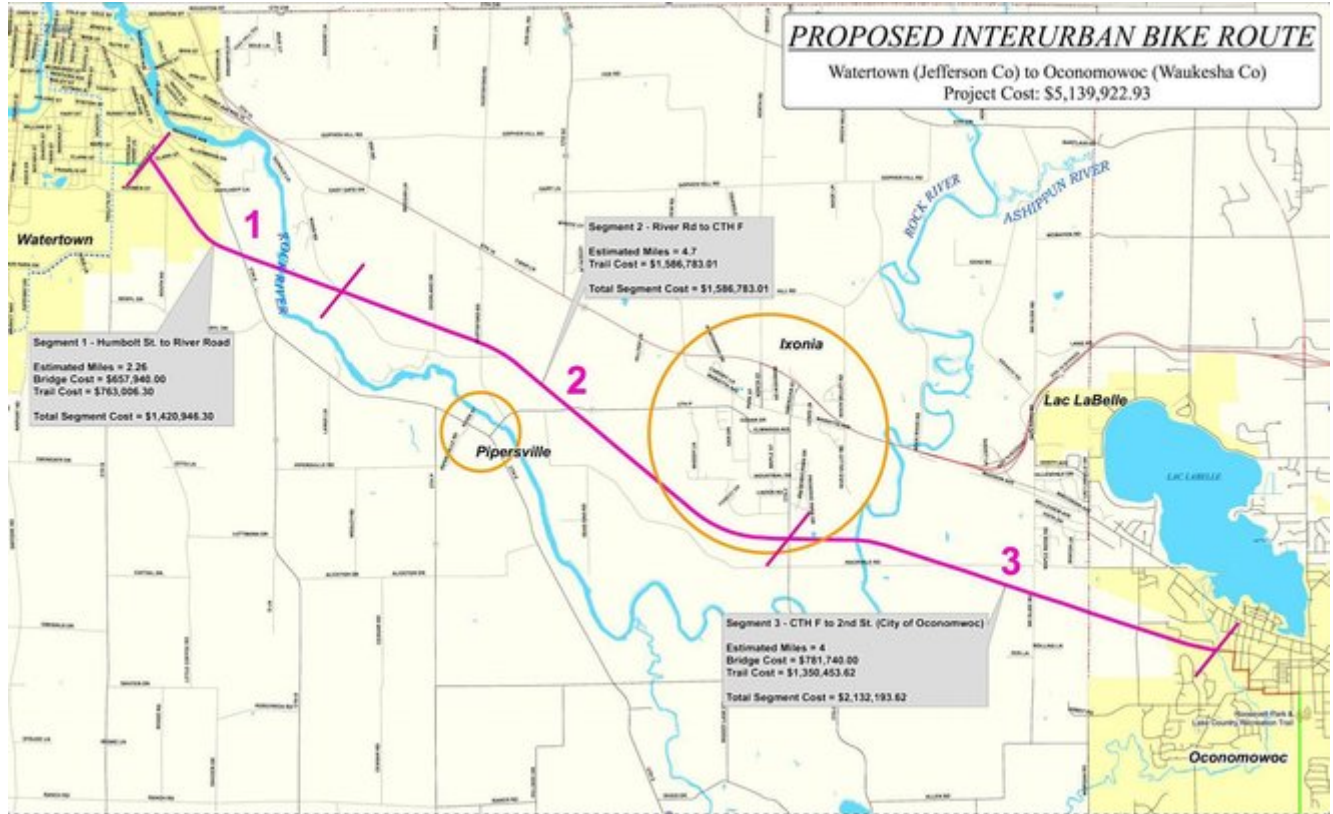
Visit: http://www.jeffersoncountywi.gov/departments/departments_fr/bike_trails.php for more information or to donate.

Email: eoliver@conley.net

Lake Country Reporter

[Home](#) » [Lake Country News](#) » [Lake Country Reporter](#)

Grant could be used to help build 10-mile bike trail from Oconomowoc to Watertown



A map of a purposed bike trail shows the link between the cities of Oconomowoc and Watertown. This trail will connect with a current network of trails that lead to the lakefront in Milwaukee.

By Patrick Thomas

Nov. 2, 2015 9:23 a.m.

Oconomowoc Parks and Recreation director John Kelliher called a future 10-mile bike trail connecting the city with Watertown would be "positive for everyone involved."

"Connectivity between Watertown and Oconomowoc could be a huge asset for the future," Kelliher said. "Construction on the trail will start on their (Watertown's) end and work toward Oconomowoc's."

Trail construction received a boost recently when Jefferson County received a grant of about \$179,000 from the Wisconsin Department of Natural Resources, but the amount fell well short of what the county applied for.

Joe Nehmer, Jefferson County Parks Director, said the county had applied for a grant of more than \$700,000 to help pay for a bike path connecting Watertown and Oconomowoc. The proposed bike trail would span 10 miles and is estimated to cost a little more than \$5 million.

A local donation

The project recently received a \$1,000 donation from Oconomowoc resident Mike Herro on behalf of the Oconomowoc Rotary Club, Nehmer said.

The trail is to be a blacktop-paved, off-road, multi-use trail that will support bicyclists, pedestrians and non-motorized recreational purposes.

"The amount we applied for would have allowed us to start the Watertown end of the project, and get a bridge built over the Rock River this winter," Nehmer said. "With the amount we got from the DNR, we don't have enough money to do that. Instead, we have to spend the rest of the year fundraising."

Bike to lakefront

Nehmer said that the trail connecting Watertown and Oconomowoc would also connect to a series of other well-used trails leading to the lakefront in Milwaukee. The starting point for the trail will be at the northern end of the Glacial River Trail in Watertown. It will also connect to trails such as the Lake Country Trail in Waukesha County and the Hank Aaron Trail in Milwaukee.

The proposed trail has been a long-standing idea in both Jefferson and Waukesha County. Nehmer said the idea of a bike trail between the cities of Watertown and Oconomowoc started in Waukesha County back in 1974. And was proposed again in Jefferson County in 1978, but the trail never happened. Nehmer said the trail has been talked about since he first began his tenure as Jefferson Parks Director 37 years ago.

"We want to get the word out to build partnerships so we can get this trail built," Nehmer said. "This has been a long-time ambition of many people, and we feel the time is now. It's going to be a beautiful and safe way to have connectivity between Watertown and Oconomowoc."

Grant award gets bike trail rolling

By **PATRICK THOMAS**

news@cniow.com

Oconomowoc Parks and Recreation director John Kelliher called a future 10-mile bike trail connecting the city with Watertown would be "positive for everyone involved."

"Connectivity between Watertown and Oconomowoc could be a huge asset for the future," Kelliher said. "Construction on the trail will start on their (Watertown's) end and work toward Oconomowoc's."

Trail construction received a boost recently when Jefferson County received a grant of about \$179,000 from the Wisconsin Department of Natural Resources, but the amount fell well short of what the county applied for.

Joe Nehmer, Jefferson County Parks Director, said the county had applied for a grant of more than \$700,000 to help pay for a bike path connecting Watertown and Oconomowoc. The proposed bike trail would span

10 miles and is estimated to cost a little more than \$5 million.

A local donation

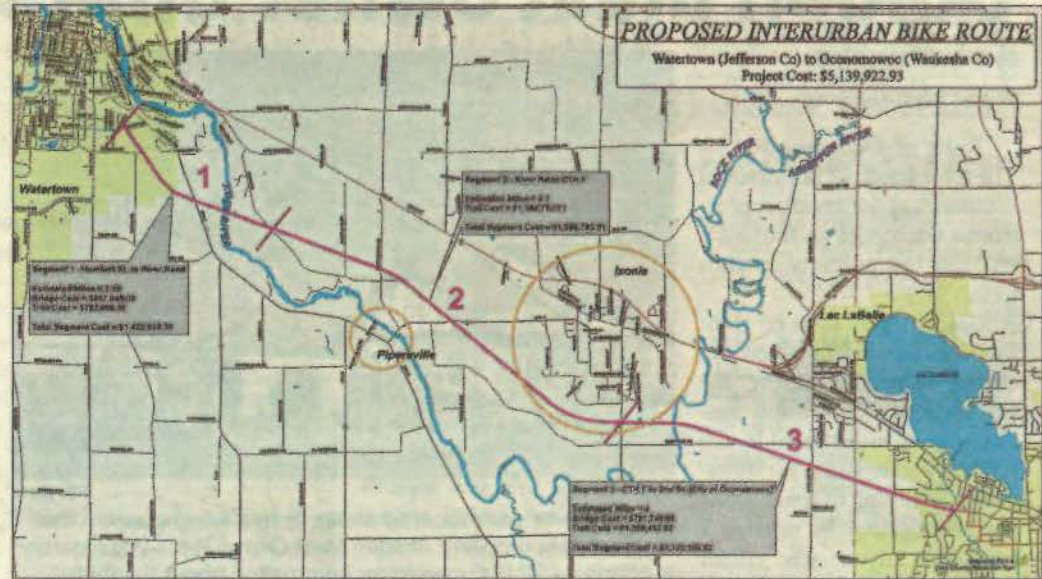
They project recently received a \$1,000 donation from Oconomowoc resident Mike Herro on behalf of the Oconomowoc Rotary Club, Nehmer said.

The trail is to be a blacktop-paved, off-road, multi-use trail that will support bicyclists, pedestrians and non-motorized recreational purposes.

"The amount we applied for would have allowed us to start the Watertown end of the project, and get a bridge built over the Rock River this winter," Nehmer said. "With the amount we got from the DNR, we don't have enough money to do that. Instead, we have to spend the rest of the year fundraising."

Bike to lakefront

Nehmer said that the trail connecting Watertown and Oconomowoc would also connect to a series of other



A map of a proposed bike trail shows the link between the cities of Oconomowoc and Watertown. This trail will connect with a current network of trails that lead to the lakefront in Milwaukee.

well-used trails leading to the lakefront in Milwaukee. The starting point for the trail will be at the northern end of the Glacial River Trail in Watertown. It will also connect to trails such as the Lake Country Trail in Waukesha

County and the Hank Aaron Trail in Milwaukee.

The proposed trail has been an idea that started in 1974.

"We want to get the word out to build partnerships so we can get this trail built," Nehmer

said. "This has been a long-time ambition of many people, and we feel the time is now. It's going to be a beautiful and safe way to have connectivity between Watertown and Oconomowoc."

CLASSIFIEDS You may find what you've been looking for!

JCPG LVG2X75 BW_YC

NEW FALL STYLES ARRIVING

OLD TOWN

new balance

Alégria

WE KNOW YOUR CARS!

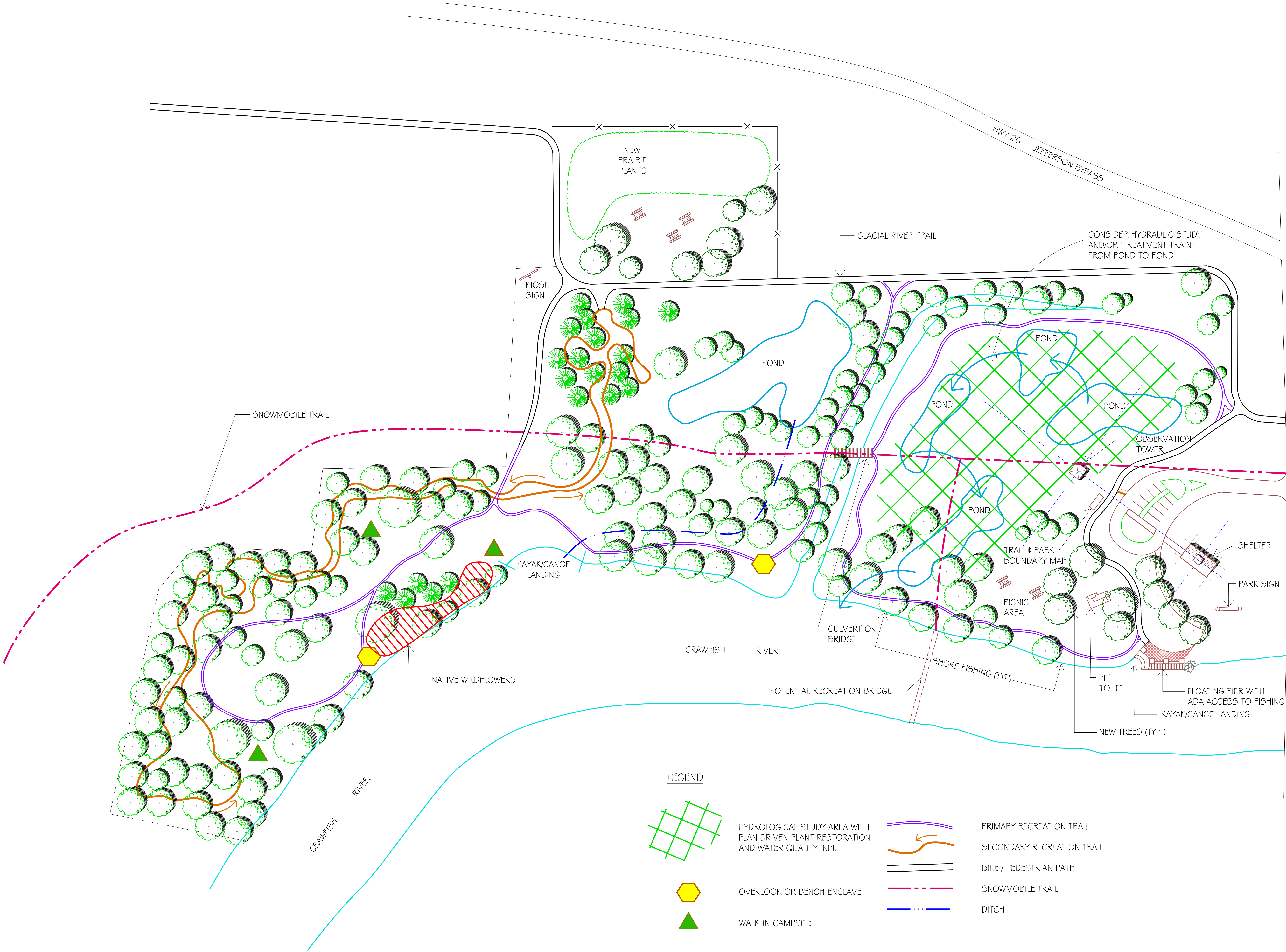
We Know Brakes, Tires, Steering & Suspension Systems, Power Windows, Power Top Systems

BMW's twin turbo systems, X drive, oil consumption problems, breather system troubles. We have the programming licenses & software for BMWs.

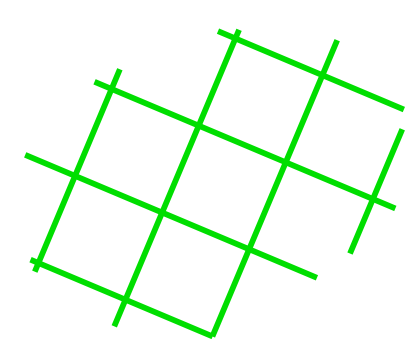


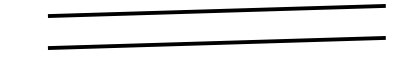




Mini Cooper's variable transmission systems, carbon build up walnut blasting on site!

Subaru's timing belt systems, all wheel drive systems, oil & coolant leaks, head gasket failures.

Lexus/Toyota's timing belt systems, tire pressure monitoring systems, emissions failures. We



LEGEND

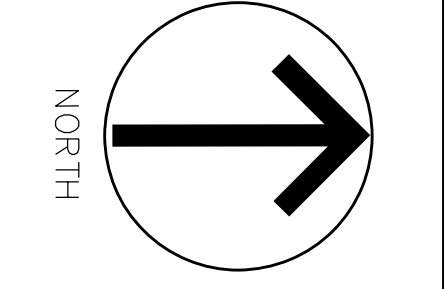
-  HYDROLOGICAL STUDY AREA WITH PLAN DRIVEN PLANT RESTORATION AND WATER QUALITY INPUT
-  PRIMARY RECREATION TRAIL
-  SECONDARY RECREATION TRAIL
-  BIKE / PEDESTRIAN PATH
-  SNOWMOBILE TRAIL
-  DITCH
-  OVERLOOK OR BENCH ENCLAVE
-  WALK-IN CAMPSITE

* THIS DRAWING REPRESENTS A "GENERAL PLAN GUIDE" WITH SOME ADJUSTMENTS EXPECTED.

REVISIONS

MARCH, 2015
APRIL, 2015
MAY, 2015
JUNE, 2015
AUGUST, 2015

Copyright 2015,
 Jennings & Assoc.,
 No reproduction or transmission
 without permission.



CRAWFISH RIVER COUNTY PARK
 MASTER PLAN

SEPT. 2015
 DRAWN BY: TWGraphics LLC
 CHECKED BY: TJ

SCALE: 1"=60'
L-1
 SHEET #1 OF 1
 CRAWFISH

Jefferson County Parks Department and Committee

Proceedings Report: Crawfish River Park Master Plan (Design Charrette Process)

Participants

Margaret Burlingham (Landscape Architect)

Walt Christensen

Patricia Cicero

Andy Didion

Matt Foelker

Tom Jennings (Landscape Architect)

Tom Mortensen (Landscape Architect)

Joe Nehmer

Mary Nimm

Laura Payne

Augie Tietz

Kevin Wiesmann

Facilitated and Compiled By:

Steve Grabow, Professor and Community Development Educator

University of Wisconsin-Extension, Jefferson County Office

December 2, 2015 - Draft

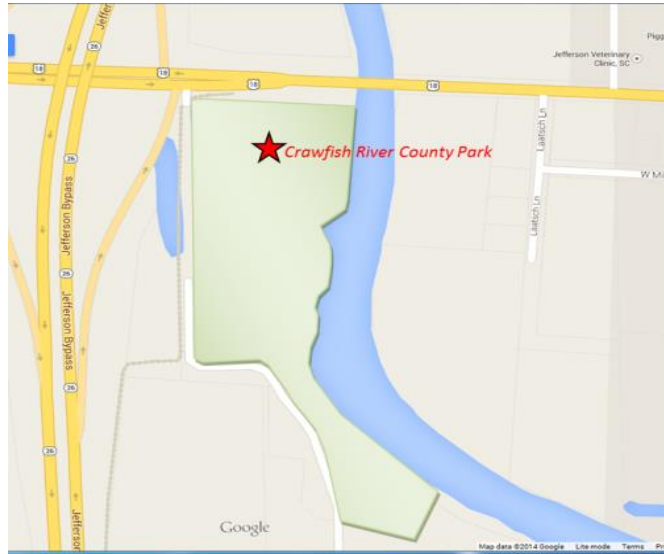


Table of Contents

Crawfish River Park – Design Charrette Process

Section 1: Process Steps	1
Section 2: Initial Visioning Workshop	3
Section 3: Design Charrette Event: Outcomes and Program Direction	9
Section 4: Proposed Activities: Implementation Guide	11
Section 5: Crawfish River Park Master Plan-Drawing	14
Appendix:	16
• Agenda: Workshop 1	17
• Agenda: Workshop 2	18
• Agenda: Workshop 3	19
• Public Input Questionnaire: Crawfish River Park Plan Process	20
• PowerPoint Presentation on Technical Observations by Parks Staff	22

Section 1

Crawfish River Park: Design Charrette Process Steps

In early 2014, Steve Grabow was asked by the Parks Director and Parks Committee to help design a planning process for a newly acquired County Park, the Crawfish River Park. There was not a budget for this project so a low or no-cost master planning project was requested. Initially, the Parks Director and the Crawfish River Friends Group had hoped that either a graduate student from the UW Department of Landscape Architecture or a student doing a year-long Senior Thesis/Capstone project could provide the professional services needed for this master plan. Steve Grabow prepared proposals for both of these options, but no student selected our project. The Parks Director and Steve Grabow then agreed that the design charrette method, using local designers and staff, would be the way to go for the Crawfish River Master Plan.

This design charrette process is based on methods developed by the National Charrette Institute (Lennertz and Lutzenhiser, 2006), the American Institute of Architects' Minnesota Design Team, and a Community Design Team Approach (Mehrhoff, 1999). This program included learning processes and adaptations of research-based, interactive and dynamic community design process.

The Crawfish River Park planning process design included the solicitation of three local landscape architects willing to participate with just a modest honorarium (at a fraction of the cost of typical consultant's professional service fees). Key process steps included: development and distribution of an online survey about potential activities and functions on the site, a visioning workshop with broad stakeholder invitations, an all-day interactive charrette with the design and park professionals, development of an implementation guide and plan review with the Parks Committee.

Participants in the charrette processes were fully engaged in a research-based, interactive community design process. The UW Extension processes facilitate participatory decision making skills and use multiple techniques to help participants generate ideas, synthesize ideas and reach decisions. The excitement from the design charrette process attracts professional designers. They essentially donate a significant amount of their time for the opportunity to experience this unique, high energy process.

Each step of the design charrette process has been documented. This "Proceedings Report" includes individual sections for these steps, including:

- Initial Visioning Session (Section 2):
 - Review of Technical Site Characteristics
 - Facilitated Session on Site Strengths, Limitations and Challenges
 - Facilitated Session on Hopes and Vision Ideas for the Site

- Formal Design Charrette Session (Section 3):
 - Review Initial Visioning Session Ideas
 - Site Analysis
 - Design and Placement of Elements
 - Site Functions and Components
 - Program Direction
 - Initial Site Plan Drawing Options/Sketches
- Master Plan Refinement and Implementation Activities Session (Section 4):
 - Review “Proceedings Report” from Design Charrette Session
 - Refine Master Plan
 - Identify Plan Implementation Activity
 - Subsequent Master Plan Development (multiple versions)
 - Several versions of the Crawfish River Master Plan were developed by the Charrette Manager (Tom Jennings) and periodically reviewed by participants
- Final Crawfish River Park Master Plan Drawing (Section 5):
 - The final Master Plan Drawing has been developed for consideration by the Parks Department and Parks Committee

Section 2

Initial Visioning Workshop

This workshop consisted of a review of technical site characteristics by Parks Staff. Subsequently, a facilitated session identified site strengths, limitations and challenges. A major outcome was the development of hopes and vision ideas for the site.

The ideas generated at the workshop have been organized into categories or themes. These represent individual ideas, and the extent of agreement or disagreement was not tested. This session was used to inform the subsequent design charrette event.

EXISTING STRENGTHS/ASSETS

Partners/Volunteers

- A. Proximity to schools (middle, HS, elementary – all nearby)
- B. School owns land nearby
- C. Property results from public/private partnership (people like Andy & spirit of public good)
- D. Model for partnership; energy
- E. Group of volunteers – “friends looking for direction”
- F. Lots of local buy-in

Access/Proximity

- A. Proximity/access to population; especially by bike
- B. Land itself: 1/3 flood; 1/3 high and dry; good habitat (ducks to turtles)
- C. Beyond just a Jefferson park; accessible Illinois – Horicon; great stop on GRT and river recreation
- D. No vehicle access (could also be weakness) because it is remote
- E. 17 acres/2,200’ near City

Site Features

- A. 2,200’ of river frontage
- B. Special “feeling”; diverse site (tucked-in)
- C. Upland area felt like a summer camp
- D. Adjacency of upland to lowland; special edges

Habitat/Biodiversity/Prairie

- A. Biodiversity of site
- B. Different habitat in small area

Destination/Appealing to Many/Signage

- A. Many activities; appealing to many

Education/Interpretation

- A. Can be used for more education/summer school to learn about habitat

River/Flood/Shoreline

- A. River land hard to come by

LIMITATIONS/CHALLENGES

Condition/Hazards/Aesthetics

- A. Existing fill, cement barriers collapsing
- B. Dealing with “dug-out” condition
- C. Challenge of restoring cement fill
- D. Needs for general “clean-up”; removal of debris
- E. Potential liability of retention ponds, areas that could wash out (people falling in, maintenance, animals making holes, wash-out areas)
- F. Hazards on site
- G. Ditches have steep slope

Transportation/Safety/Parking

- A. Bicycle/Pedestrian access that is safe
- B. Cars and trucks on Hwy 18 – Heavy traffic
- C. Parking makes bike access difficult east toward town
- D. Challenges using HWY 18 on bikes (especially for families/youth)
- E. Speed limit too fast by park (should lower to 25-35 mph)
- F. DOT ruling: no curb-cut for off-road parking (as part of sale condition)
- G. DOT ruling: can allow only 4 or 5 cars along highway for parking

River/Flood/Shoreline

- A. Access to park is limited during flood stage
- B. Flooding could change topography
- C. Shoreline access is difficult, steep, wooded (in some areas)

Access/Proximity

- A. Proximity to Jefferson (difficult for safety, police patrol, potential vandalism, graffiti) – security concerns.

Habitat/Biodiversity/Prairie

- A. Invasive species

Infrastructure

- A. Challenge of access to electrical; would need upgrades

Partners/Volunteers

- A. Challenge of “neighbor interests”

HOPES/VISIONS

Habitat/Biodiversity/Prairie

- A. Hope for habitat assessment (natives, etc.) and management plan
- B. Hope to build on wild flower prairie on south end
- C. Hope for introduction of natives (forbs, plants, etc.)
- D. Hope to enhance water habitat for rare fish species (first explore/research)
- E. Hope for “swaths” for ducks by making water control devices (natural areas for ducks)
- F. Hope to address emerald ash borer challenges and to address potential impacts to ash tree decline
- G. Hope for a “replanting” of trees; quality trees (need a planting plan)
- H. Hope to use “free tree” programs (oaks, others)

Transportation/Safety/Parking

- A. Hope to provide safe-crossing for snowmobile
- B. Hope for parking areas (along J, other areas along W) for access by bike
- C. Hope for short/long term parking areas (look at all options)
- D. Hope to address “drop-off” opportunities for school groups, paddlers, others
- E. Hope for pull-off and drop-off sites for cars/buses
- F. Explore parking options on east side of river

Partners/Volunteers

- A. Hope to partner with new owner (of 5 acre site) for parking, easement, bridge connection
- B. Partner with snowmobile club to explore funding source for bridge/other
- C. Hope for guide for volunteer “work plan”
- D. Use volunteers for tree planting/other
- E. Hope to partner with Piggly Wiggly for parking, retail, other

Destination/Appealing to Many/Signage

- A. Hope for this as a destination, rest-stop, shade for bikes (good stop-over for thru bikers)
- B. Destination /target for Glacial River Bikes (Market)
- C. Destination for longer-trip paddlers (rest and stop and picnic)
- D. Hope for signage for this park (Where? What?)

Education/Interpretation

- A. Opportunity for “interpretation” of natural features
- B. Hope for kiosk (interpretive panels for education)
- C. Hope for “marked features” for interpretive walk for school children
- D. Hope to tell stories about site/features

HOPES/VISIONS (Continued)

Trails

- A. Hope for sustainable trail system
- B. Hope for “coherent” path and trail system
- C. Hope for trail map
- D. Hope for trail connections over water – north to south

Biking

- A. Hope for “bike fix-it” station (do it yourself station)
- B. Hope for trails that tie into Glacial River Bike Trail
- C. Hope for mountain bike trail – low impact trail; an easy/beginner trail for youth; similar to Cam-Rock Park(ease on outskirts of site); design to avoid conflict with hikers – i.e.: separate from hiking trail; possibly along edges or park perimeter

Condition/Hazards/Aesthetics

- A. Hope for better, more natural “look” on the north end (soften the scarification of north end)
- B. Hope for aesthetic look as key entry/first impression coming into Jefferson on HWY 18
- C. Hope to remove fence/other unsightly areas

Gathering/Picnic/Shelter

- A. Hope for gathering places
- B. Hope for amphitheater/gathering
- C. Hope for areas to gather youth for education/experiential
- D. Hope for non-traditional shelter (a smaller scale shelter with Jefferson County Parks character)

Land Acquisition/Connections

- A. Hope to purchase some contiguous land
 - a. 3 acres on south end of park
 - b. Good place for picnic area along bike trail
- B. Purchase land on east side of river for potential link to 17 acres – 5 acres that could be linked to existing park with a snowmobile/foot/bicycle bridge
 - a. Access to sewer and water
- C. Hope to connect Riverside Park on south side of river from Crawfish (trail along south side of river connecting these two parks)

Camping

- A. Hope for camping for bikes and paddlers (primitive campsites; simple, flat area)
- B. Hope for cost-effective camping (2 or 3 sites) with water, food hand, fire circle, water (drinking) and restroom.

HOPES/VISIONS (Continued)

Paddling

- A. Hope for canoe/kayak access
- B. Identify destination options for paddlers (i.e. from Riverside Park)

River/Flood/Shoreline

- A. Hope for decent fishing pier (possibly rehab existing fishing platform)
- B. Hope for “overlook” platform/structure

Access/Proximity

- A. Hope for access from east

WRAP UP

- Proceedings Report of this session will be compiled.
- Put survey on websites: Rock River Coalition, Crawfish Friends, Glacial Heritage Area.

Section 3

Design Charrette Event: Outcomes and Program Direction

The design charrette process is a very dynamic and spontaneous process led by the Charrette Manager (Tom Jennings). The focus of this activity is to develop sketches and drawings of site plan concepts on the base map/aerial photo. However, there were times in the process where the planning team needed to come to consensus on planning concepts. Periodically, the Facilitator (Steve Grabow) captured ideas in narrative format to guide master plan development. These ideas were organized by functions or components of the site. These observations provide program direction for the Master Plan and complement the graphic site plan. Listed below are the programming ideas that were agreed to by the charrette planning team.

Transportation/Safety

- Silent Sports Access – “Feeling”
- Bike Safety Features (paint/pylons, etc.)
- Allow/Accommodate current 5-spot parking (along Hwy. 18 or small off-road lot)
- Advocate biking-in, paddling-in, walking-in
- School Access – walk/bike as part of field trips
- Parking Linkages: to potential new parking off: J, W, UWEX, HHS, Hwy. 18

Restoration/ Connectivity (North)

- Connectivity: both trail and hydrology experience
- Understand hydrology before detailing
- Major enhancement along HWY 18 corridor
 - Carrying through signature park features (signage, split rail)
 - Major paddling/water access (Koshkonong Creek/ Cambridge example)
 - Gathering Area (bikers/paddlers/walkers/fisherman):
 - Kiosk/Interpretation/Small Shelter/Picnic tables
 - Subtle Sculpture
 - Announce Park: gateway to Glacial River Trail and Glacial Heritage Area
 - Tree Grove/Native/Picnic Table
 - Simple and bold
- Demolition: text to describe; remove clutter
- Restoration: better shoreline along drainage
- Plinth area: overlook of river

Uplands (Southern)

- Major node off bike path – Glacial River Trail GRT (announce/tell park story)
- Destination feature area(s)
- Paved bike path from node off GRT to overlook/river view shed * (out-back)
- Determine (ground truth) other river overlooks/maintained view shed
- Develop paddling put-in/take-out at interface of “uplands & wetlands.”
- Potential “niche” areas for 2 or 3 campsites (one pit-toilet, fire rings, picnic table, food hang, potable water (place near bike overlook- water hand pump)
- Extend multi-purpose trail (mowed trail)
- Small shelter (bike destination; used by campers; picnic; school groups, paddlers)

Other Program Direction

Bridges/Crossing:

- One new foot bridge
- One enhanced culvert crossing
- One long-term Crawfish River Bridge (funded in partnership with snowmobile organizations, DNR Stewardship, other fundraising sources – direct link to schools)

Low impact design: use existing as much as feasible; “human scale”

Restoration: need to establish focus or theme, i.e.:

- Water quality & vegetative quality
- Flood Control
- Remove hummocks; make bank slopes less steep

Wrap-up

- Proceedings Report to be prepared by UW-Extension
- Tom Jennings: Develop a master plan/site plan drawing
- Tom Mortensen: Develop a hydrologic approach/theme
- Smaller group: Steve Grabow to facilitate the development of a guide for implementation activities and those leading the implementation.
- To Parks Committee after the next workshop

Section 4

Proposed Activities: Implementation Guide

Participants generated a list of proposed activities to initiate and guide implementation of ideas from the design charrette. Since this process is not a “formal” plan, these ideas should be considered preliminary and will be subject to refinement.

Note: Subsequent to this workshop, the participants have re-thought the notion of mountain biking at this park site. Another nearby County site has been deemed more suitable for mountain biking.

General Trails

- A. Ground truth and lay out trails. (2015/2016)
- B. Field layout of walking/hiking paths. (2015/2016)
- C. Develop management policy for trail use.
- D. Refine walking trail system in north segment (now that we have removed mountain bike).
- E. Get surveyor in to show Hwy 18 ROW.
- F. Get DOT easement (West of Glacial River Trail bike path and east of Highway 18).
- G. Note: Plan Revisions (near middle overlook); hike trail adjustments; PI/TO identified.
- H. Note: Some suggestions for adjustment in trail routes in southern section.
- I. Fill in old swimming pool (enables walking path).
- J. Use plan drawing and notes for plan implementation.
- K. Plan revision – paved path realigned to overlook further south.
- L. Note plan revision: show snowmobile trail alignment.

Bridge

- A. Work with snowmobile club to add foot-bridge over ditch.
- B. Establish a “culvert bridge” foe ditch crossing.
- C. Get a “culver” permit.
- D. Parks to remove trees on designated/revised snowmobile bridge; wide enough for groomer.

Parking

- A. Look into permitting requirements for filling old swimming pool.
- B. Contact DOT with our plan for new parking lot.
- C. Explore existing old parking lot (can we build new parking lot over this?).
- D. Do pre-engineering activities for the parking lot area.

Restoration/Site

- A. Remove trash, fence-posts, fences (volunteers, Parks, Friends). (2015/2016)
- B. Contact snowmobile club about “brushing” new trail alignment through park. (2015/2016)
- C. Use surveys on culverts.
- D. Work with DOT engineers on acceptable water levels on two culverts.
- E. Contact for hydrologic plan and restoration.
- F. Remove silver maples (forestry work).
- G. Consider use of “donor funds” or “Ducks Unlimited” or “Fish & Wildlife” for hydrologic study.
- H. Contact DOT for easement for parcel west of bike path and east of bypass (for prairie, plantings and picnics).

River Campsites

- A. Note: plan revision – add campsite near middle overlook (3rd camp site; so we would have two river side campsites).

Signage/Maps

- A. Develop sign system for trail system (Project/Park Boundary); paper map initially. (2015/2016)
- B. Develop a trail and sit orientation map (for users’).
- C. Plan revision: add trail sign/donor sign.

Capital Improvement Requests

- A. Identify capital project request: parking lot, shelter, gathering area, kayak/canoe landing, observation tower, 2 culverts. (2015/2016)
- B. Include paved bike path to river overlook in County Capital program.

Mountain Biking (Note: This component was suspended at this site (another nearby site was chosen for developing a mountain biking trail system; the ideas below are no longer applicable.)

- A. Lay out mountain biking trails (one-way); beginner's trail – kids – we like the layout.
- B. Mountain bike trail system (i.e. eliminate mountain bike routes on north segment; truncate on northern edge of pines).
- C. Contact Jefferson County Bike Club to take lead on mountain bike trail plan. (2015/2016)
- D. Finalize the RFP to become a local unit of the IMBA. (2015/2016)
- E. Mobilize volunteers to help design and build mountain bike trails. (2015/2016)
- F. Train our local base of volunteers for designing a trail (working with IMBA). (2015/2016)

Follow-Up

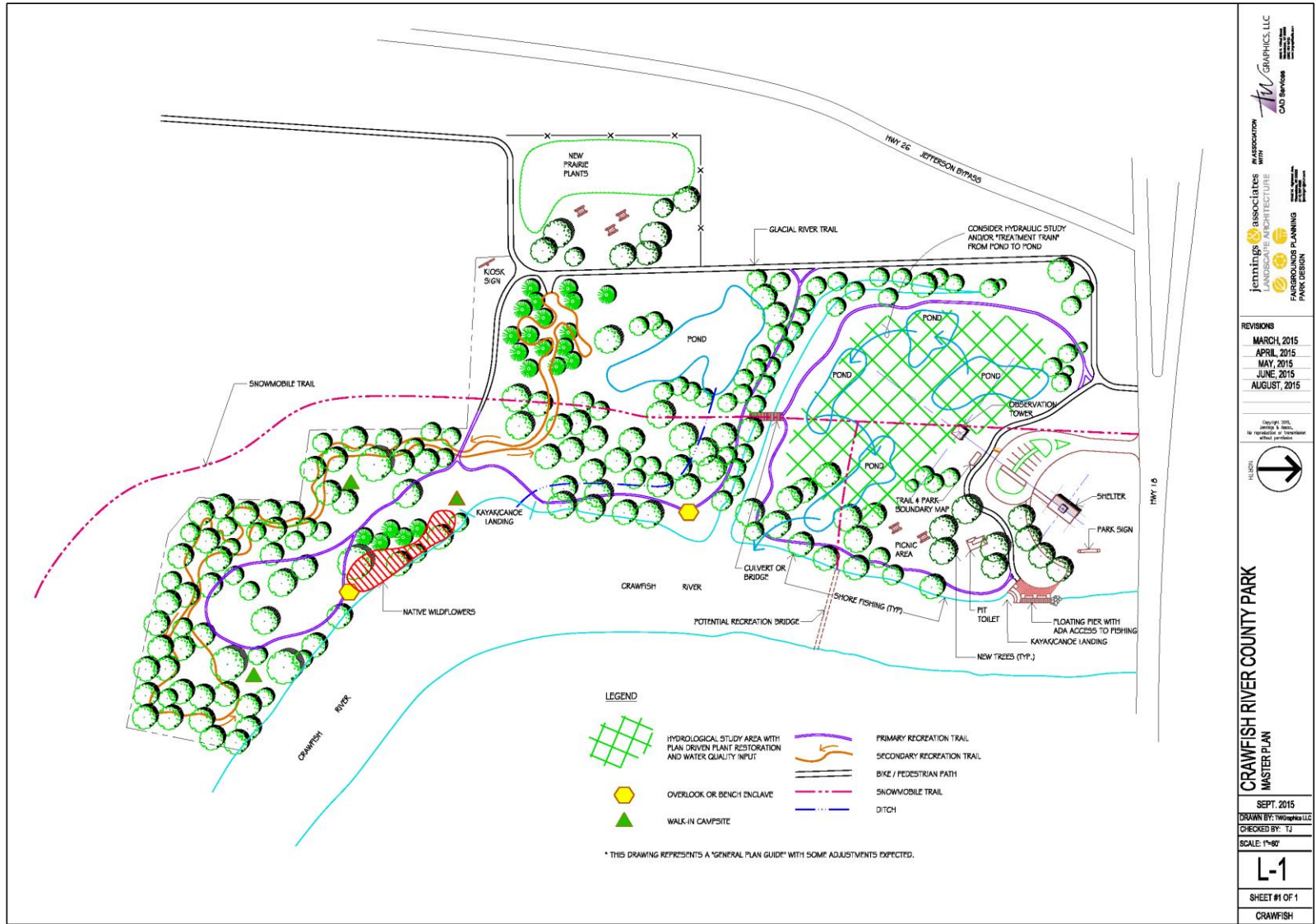
- A. Tom Jennings to prepare new Master Plan (with revisions from today)
- B. Tom Jennings to send pdf
- C. Parks staff/Andy to review for final changes.
- D. Steve Grabow to take back to Tom Jennings for another draft
- E. Priority Designation will be determined by Parks Staff
- F. Near Term Activities – Are designated with (2015/2016).
- G. This report and plan report will be considered by the Parks Department and Parks Committee. Committee action and policy direction is expected.

Note: Several versions of the Crawfish River Park Master Plan were subsequently prepared and reviewed by participants. Refinements to the plan were incorporated in each version.

Section 5

Crawfish River Park Master Plan Drawing

(After the development of several versions, the final Crawfish River Park Master Plan drawing is provided on the next page.)



ASSOCIATION WITH

REVISIONS
 MARCH, 2015
 APRIL, 2015
 MAY, 2015
 JUNE, 2015
 AUGUST, 2015

Design 2015, 2016, 2017, 2018, 2019, 2020, 2021, 2022, 2023, 2024, 2025
 No reproduction or translation without permission

HUBCH

CRAWFISH RIVER COUNTY PARK
MASTER PLAN

SEPT. 2015
 DRAWN BY: TWD Graphics LLC
 CHECKED BY: TJ
 SCALE: 1"=80'
L-1
 SHEET # OF 1
 CRAWFISH

APPENDIX

- **Agenda: Workshop 1 – Crawfish River Park Visioning Workshop**
- **Agenda: Workshop 2 – Design Charrette**
- **Agenda: Workshop 3 – Proposed Activities: Implementation Guide**
- **Public Input Questionnaire: Crawfish River Park Plan Process**
- **PowerPoint Presentation on Technical Observations by Parks Staff**

Crawfish River Park

Workshop 1 Initial Visioning Workshop

UW Extension, Room 103 (Upper Level)

2:00 p.m. November 11, 2014

Agenda

- Welcome: Joe Nehmer and Augie Tietz
- Overview of Agenda and Meeting Guidelines: Steve Grabow
- Technical Site Characteristics: Parks Staff
 - Context and Background about this Park
 - Descriptive characteristics, inventory and site features
- Facilitated Session: Steve Grabow
 - a. Opener: Why are you interested in this park site?
 - b. Strengths: What do you see as existing strengths associated with this park site?
 - c. Limitations and Challenge: What are some potential limitations or challenges associated with this park site?
 - d. Vision Idea Prompts:
 - ❖ What are your hopes for features, facilities, character and/or activities at this park? or
 - ❖ What would you like to see in place some day at the Crawfish River Park? (short-term and/or long-term) or
 - ❖ What is your vision for what a successful Crawfish River Park would look like?
 - e. What are other ideas about this site would you like to share?
- Wrap-Up: Next steps, Public Input Questionnaire, Other

Prepared by: Steve Grabow, Professor and Community Development Educator, UW Extension, Jefferson County Office, November 5, 2014

Crawfish River Park

Workshop 2 Design Charrette

**UW Extension, Room 12
December 19, 2014**

9:00 a.m. – 3:00 p.m.

Agenda

- ❖ Overview of Charrette Process (Grabow, Facilitator)
- ❖ Ground Rules and Meeting Guidelines (Grabow, Facilitator)
- ❖ Review Findings (Visioning Workshop 1 on November 11th)
- ❖ Charrette Process (Jennings, Charrette Manager)
 - Site Analysis
 - Design & Place Elements
 - Initial Site Plan
- ❖ Wrap-up & Follow-up

Crawfish River Park

Workshop 3

Master Plan Refinement and Implementation Activities

UW Extension, Room 12

May 12, 2015

Agenda

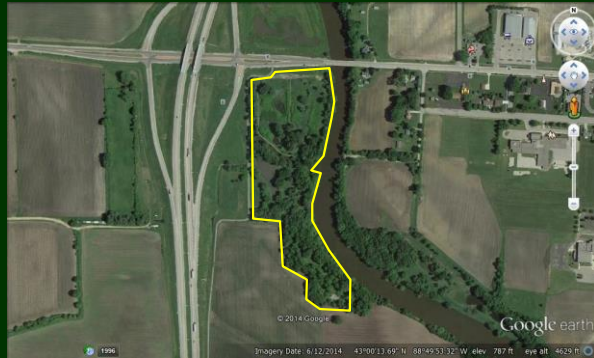
- ❖ Review Plan
 - Documents
 - Plan Drawing
- ❖ Plan Implementation Activity
 - Initial Idea Listing
 - List actions, tasks, initiatives for “Plan Functions”
 - Develop draft “Activity Chart”
- ❖ Adjourn (4:00 pm)

4. Listed below is a collection of typical county park recreation and open space facilities and activities. Please rate the relative importance or need for these activities in consideration for the 17-acres, known as Crawfish River Park.

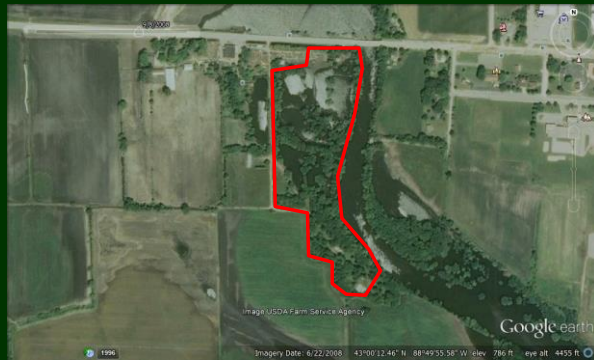
Rating of Relative Need or Importance (Circle one number for each activity/facility)						
<u>Activity/Facility</u>	<u>Not Important</u>		<u>Somewhat Important</u>		<u>Very Important</u>	<u>Comments</u>
Bike Trails/Improvements	1	2	3	4	5	
Bird Watching	1	2	3	4	5	
Camp Sites	1	2	3	4	5	
Canoe/Kayak Launches	1	2	3	4	5	
Cross Country Ski Trails	1	2	3	4	5	
Fishing Piers	1	2	3	4	5	
Fishing Along Shore	1	2	3	4	5	
Gardening/Planting Areas for Outdoor Education	1	2	3	4	5	
Guided Nature Walks	1	2	3	4	5	
Hiking Trails	1	2	3	4	5	
Historical/Cultural Resources • Preservation Areas • Interpretation/Education	1	2	3	4	5	
Hunting	1	2	3	4	5	
Ice Skating	1	2	3	4	5	
Natural Resource Areas • Preservation of Tracts • Interpretation/Education • Improve Native Vegetation	1	2	3	4	5	
Open Space for Play	1	2	3	4	5	
Pavilion (year-round shelter)	1	2	3	4	5	
Play Area with Play Equipment	1	2	3	4	5	
Observation Deck Over Water	1	2	3	4	5	
Parking Access	1	2	3	4	5	
Picnic Areas	1	2	3	4	5	
Picnic Shelter	1	2	3	4	5	
Restrooms	1	2	3	4	5	
Snowmobile Trails	1	2	3	4	5	
Trapping	1	2	3	4	5	
Volunteer Opportunities	1	2	3	4	5	
Other: _____	1	2	3	4	5	



Project Overview



9/8/2008



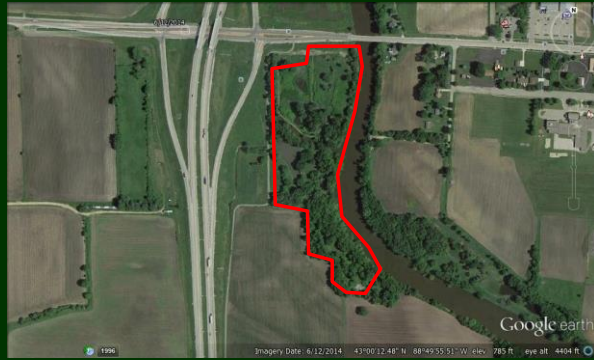
9/26/2010



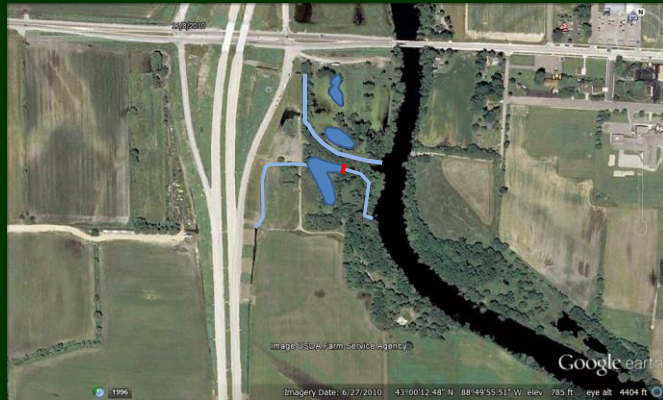
11/8/2010



6/12/2014



Water features





*Rivers Edge From old bridge
looking South*



View from STH 18 facing South



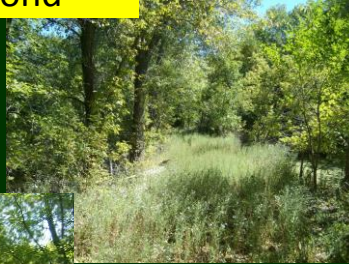
Central 1/3

Ditch entering property from the West



Pond adjacent to bike trail fed by ditch from the West

Trail near Pond



Trail at Rivers Edge

Large pond along
bike trail



South 1/3

Access lane from
the Bike Trail



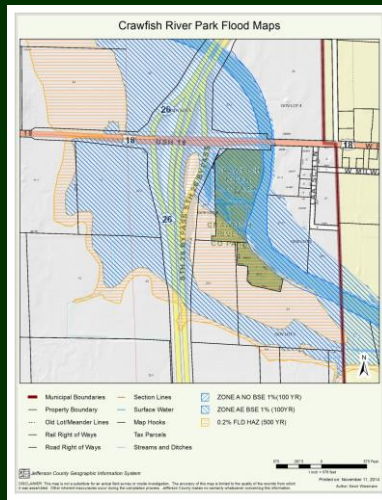
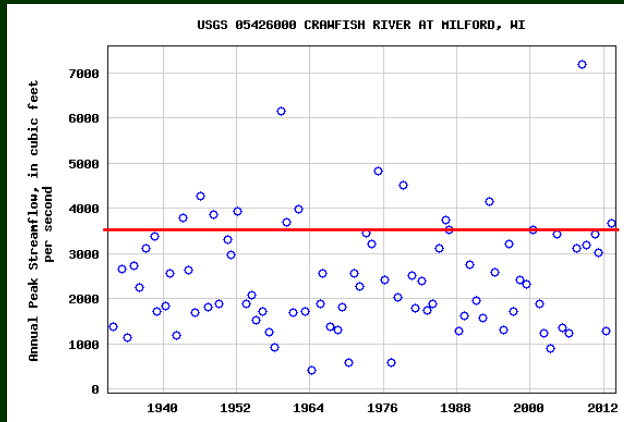
Access lane approaching
woods along field edge

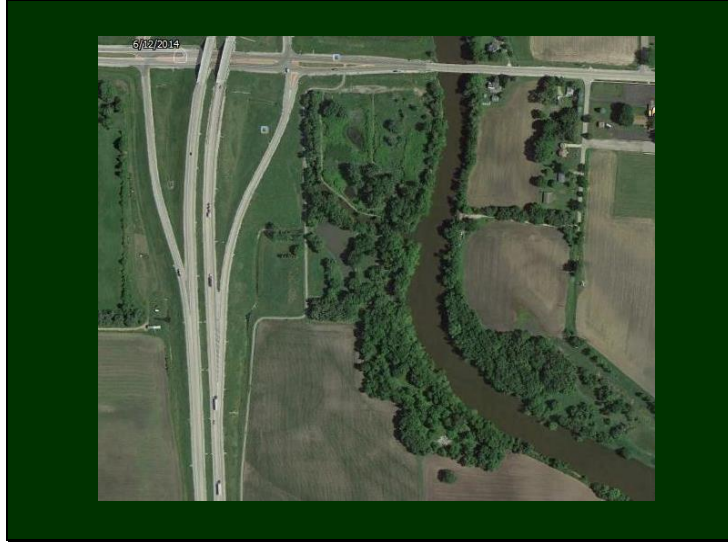
Upland woods
along rivers edge





Annual Peak Flows at Milford Gauging Station USGS





Natural Materials Art Installation at Dorothy Carnes Park

proposed for late spring/early summer into mid-autumn 2016, curated by Anne Drehfal & team

Dorothy Carnes Park is an incredible resource in our county and one of my favorite places to hike weekly. This past September, I visited trails at the Farley Center in Verona, WI, where 13 artists had created & installed art/sculptures using materials from the land; it reminded me of a similar installation in northern Wisconsin from 2007, photos of both are attached. Experiencing these sculptures in a natural environment and seeing how they weathered over the weeks/years added an interesting dynamic to my experiences there – opening my eyes to the art & beauty of the natural world in fallen trees, moss on trees, etc. I think Jefferson County and Parks Department could benefit from hosting a similar temporary sculptural exhibit at Dorothy Carnes Park in 2016. I envision our project starting small with 5-10 artists participating and being a temporary exhibit; if it is a success, we could revisit the idea and do a larger/longer exhibit in future years.

Benefits to the County/Parks Department:

- Draw new people into the park / region
- Unobtrusive (off-trail) to both people and wildlife, yet a new way of engaging in the experience of the park if you have a keen eye
- Creating a venue for Jefferson County to support local arts that isn't a formal gallery
- No county funds needed, all volunteer labor/materials/brochure printing
- All natural materials that will biodegrade or be removed, depending on length of exhibit
- Potential to team up with school art programs and art councils in the area

Logistics and things to think about:

- I envision a specific loop on the wooded west-side of Dorothy Carnes Park being the 'art loop' for this installation and printing art brochures to keep at the parking lot.
 - What sections of the park are you comfortable with using? Most popular or less traveled?
- I'd hope to see the pieces up for a few months, so visitors can watch them change with time and the surrounding seasons.
 - What duration of time can the artwork be installed for? Two months or a full hiking season (June – October; post-muddy spring into fall colors)?
- I'd like to host all of the artists and community members for an 'Artist Tour and Reception' near the opening of the exhibit. Likely two hours on a Saturday or Sunday in June 2016. Otherwise the sculptures would be open to the public as the park is open.
 - Any restrictions on the timing of event?
- I'd like to limit artists to using only natural and biodegradable materials.
 - Do you have a preference for materials coming only from on-site or being brought in? Do you have limitations on the size of the sculptures?

I'd like to request 20-30 minutes for a presentation & discussion about this topic *as an agenda item for the December 2015 Parks Department committee meeting*. Please think it over and feel free to contact me with specific questions, too.

Thanks!

Anne Drehfal, a.drehfal@gmail.com, 608-576-7605

Forest Art Wisconsin - More information/images at <http://2007.waldkunst.com> - Large scale semi-permanent exhibit on 1.5 mile Raven Trail in northern Wisconsin; Drew 20+ international artists



Earth Sculpture 2015 - More information/images at <https://www.facebook.com/events/616848495118106/> - Smaller two-month long installation at the Farley Center in Verona, WI





We Energies
231 W. Michigan St.
Milwaukee, WI 53203
www.we-energies.com

12.

November 20, 2015

Augie Tietz
Chairperson, Parks Committee
Jefferson County
311 S. Center Avenue
Jefferson, WI 53549

RE: JEFFERSON COUNTY TRAIL LICENSE: ADDITION OF A RUDIMENTARY TRAIL

Dear Mr. Augie Tietz:

Thank you for your recent email wherein you request to open up the current utility service road ("service road") on the We Energies property from Humboldt Street east to the Rock River and along the east side of our Concord Generating Station as an initial recreational trail linking the trail under the existing recreation License Agreement executed on February 18, 2015 with Humboldt Street.

You are requesting to cut and fill minor potholes and bumps in the service road to create a rudimentary walking trail. You were considering having the City of Watertown do this for Jefferson County's trail.

In the License Agreement, Section 13 - Plan, Review and Approval, it states that Jefferson County ("Licensee") is required to submit to We Energies ("Licensor") and American Transmission Company for their review and written approval at least 90 days prior to start of construction of each segment detailed site plans and construction drawings. As you are aware this license was granted so that the Licensee could start securing funds and grants to build the trail.

Company (Licensor) is willing in this case only to allow minor cut and fill of the service road to occur without any formalized plans. However, if any additional work is contemplated a plan and profile including paving or putting gravel down in the future will be required. Licensee will put proper signage marking the trail, and will secure the trail at the river for safety. All terms covenants and conditions of the license shall apply to this letter agreement. Licensee agrees to be responsible for maintenance and oversight issues that may arise along the service road.

County has been made aware that underground utilities exist and will exercise caution when doing grubbing along the road. Licensee will call Diggers Hotline to have utilities marked and shall contact appropriate individuals at We Energies as noted in the license prior to the start of this project.

As a reminder, regardless who you chose as a contractor, a local municipality or an independent contractor, the County has indemnified us from claims.

Please confirm that you agree with the terms and conditions of this letter by signing below and returning this document that you are in agreement.

Sincerely,



Julie M. Simmons
Right of Way Agent
(414) 221-2715
Fax (414) 221-2713

Please sign and date below and return to me either by scan and email, fax or mail indicating Jefferson County is in agreement with the terms and conditions of this letter agreement.

I AGREE: X _____ DATE: _____

Print Name _____ Title _____

Parks Department,

Enclosed is a donation in appreciation for the beauty of Korth Park as a setting for our Friday morning Yoga practice.

We hope to begin again when Spring arrives!

\$50.00 ck# 4267

Namaste'
Korth Park Yogis

2016
TERRI TINSLEY DOG EXERCISE AREA
AT JEFFERSON COUNTY DOG PARK

Date: 11/16/15 (Please Print)

Charlene Gates
Name

Phone

Dog(s) Name - License # - Municipality - Breed

- 1 _____
- 2 _____
- 3 _____
- 4 _____

<u>FEE</u>	<u>\$ AMOUNT</u>
\$ 25.00 Annual Dog Tag (1st Dog)	_____
<i>(Annual Tags Valid January 1, 2016 - December 31, 2016)</i>	
\$ 30.00 <u>Non- Resident</u> (1st Dog)	_____
\$ 15.00 Senior Citizen (65 yrs +)	_____
\$ 15.00 Additional Dog(s) Annual Tag	_____
\$ 10.00 Replacement Tag	_____
\$ 5.00 Daily Fee	_____
\$\$\$ Donations Welcome	<u>200.00</u>
TOTAL \$	<u>200.00</u>

Please See Reverse Side For Instructions

Jefferson County
Parks Totals

Date Ran 11/23/2015
Period 10
Year 2015

Business Unit	Description	Current Period Actual	Current Period Budget	YTD Actual	YTD Budget	Prorated Variance	Total Budget	Annual Remaining	Percentage Of Budget
1801 Parks	Revenue	(65,495.22)	(65,259.33)	(665,696.79)	(652,593.33)	(13,103.46)	(783,112.00)	(117,415.21)	85.01%
	Expenditures	53,298.80	77,246.67	696,391.63	772,466.67	(76,075.04)	926,960.00	230,568.37	75.13%
	Other Finances	-	-	-	-	-	-	-	#DIV/0!
Total		(12,196.42)	11,987.33	30,694.84	119,873.33	(89,178.49)	143,848.00	113,153.16	21.34%
1806 Carol Liddle	Revenue	(9.63)	(6.67)	(85.16)	(66.67)	(18.49)	(80.00)	5.16	106.45%
	Expenditures	-	6,800.00	-	67,999.99	(67,999.99)	81,599.99	81,599.99	0.00%
	Other Finances	-	-	-	-	-	-	-	#DIV/0!
Total		(9.63)	6,793.33	(85.16)	67,933.33	(68,018.49)	81,519.99	81,605.15	-0.10%
1809 Carlin Weld	Revenue	-	(4.17)	(250.00)	(41.67)	(208.33)	(50.00)	200.00	500.00%
	Expenditures	150.00	298.48	5,029.39	2,984.82	2,044.57	3,581.78	(1,447.61)	140.42%
	Other Finances	-	-	-	-	-	-	-	#DIV/0!
Total		150.00	294.32	4,779.39	2,943.15	1,836.24	3,531.78	(1,247.61)	135.33%
1811 Korth Park	Revenue	-	-	-	-	-	-	-	#DIV/0!
	Expenditures	-	-	-	-	-	-	-	#DIV/0!
	Other Finances	-	-	-	-	-	-	-	#DIV/0!
Total		-	-	-	-	-	-	-	#DIV/0!
1812 Carnes Park	Revenue	(11,666.67)	(1,938.00)	(26,910.22)	(19,380.00)	(7,530.22)	(23,256.00)	3,654.22	115.71%
	Expenditures	43.39	18,343.85	29,915.14	183,438.46	(153,523.32)	220,126.15	190,211.01	13.59%
	Other Finances	-	-	-	-	-	-	-	#DIV/0!
Total		(11,623.28)	16,405.85	3,004.92	164,058.46	(161,053.54)	196,870.15	193,865.23	1.53%
1813 Park Buildings	Revenue	(1,414.42)	(1,414.42)	(14,144.20)	(14,144.17)	(0.03)	(16,973.00)	(2,828.80)	83.33%
	Expenditures	962.75	1,414.42	11,323.38	14,144.17	(2,820.79)	16,973.00	5,649.62	66.71%
	Other Finances	-	-	-	-	-	-	-	#DIV/0!
Total		(451.67)	-	(2,820.82)	(0.00)	(2,820.82)	-	2,820.82	#DIV/0!
1814 Garman Nature	Revenue	(42,000.00)	(3,500.00)	(42,000.00)	(35,000.00)	(7,000.00)	(42,000.00)	-	100.00%
	Expenditures	-	4,666.67	-	46,666.67	(46,666.67)	56,000.00	56,000.00	0.00%
	Other Finances	(14,000.00)	(1,125.00)	(14,000.00)	(11,250.00)	(2,750.00)	(13,500.00)	500.00	103.70%
Total		(56,000.00)	41.67	(56,000.00)	416.67	(56,416.67)	500.00	56,500.00	-11200.00%
1816 Glacial Heritage	Revenue	-	-	-	-	-	-	-	#DIV/0!
	Expenditures	-	1,100.00	3,795.00	11,000.00	(7,205.00)	13,200.00	9,405.00	28.75%
	Other Finances	-	775.33	-	7,753.33	(7,753.33)	9,304.00	9,304.00	0.00%
Total		-	1,875.33	3,795.00	18,753.33	(14,958.33)	22,504.00	18,709.00	16.86%
1821 Snowmobile Trails	Revenue	-	(3,806.25)	-	(38,062.50)	38,062.50	(45,675.00)	(45,675.00)	0.00%
	Expenditures	-	3,806.25	45,675.00	38,062.50	7,612.50	45,675.00	-	100.00%
	Other Finances	-	-	-	-	-	-	-	#DIV/0!
Total		-	-	45,675.00	-	45,675.00	-	(45,675.00)	#DIV/0!
1824 Bike Trail	Revenue	(1,727.00)	(90.83)	(14,482.33)	(908.33)	(13,574.00)	(1,090.00)	13,392.33	1328.65%
	Expenditures	945.00	216.58	5,699.45	2,165.83	3,533.62	2,599.00	(3,100.45)	219.29%
	Other Finances	-	55.53	-	555.31	(555.31)	666.37	666.37	0.00%
Total		(782.00)	181.28	(8,782.88)	1,812.81	(10,595.69)	2,175.37	10,958.25	-403.74%
1826 Dog Park	Revenue	(4,749.38)	(3,191.67)	(38,154.68)	(31,916.67)	(6,238.01)	(38,300.00)	(145.32)	99.62%
	Expenditures	750.86	6,358.17	35,212.20	63,581.67	(28,369.47)	76,298.00	41,085.80	46.15%
	Other Finances	-	476.03	-	4,760.28	(4,760.28)	5,712.34	5,712.34	0.00%
Total		(3,998.52)	3,642.53	(2,942.48)	36,425.28	(39,367.76)	43,710.34	46,652.82	-6.73%
1840 Groundskeeping	Revenue	(2,894.88)	(3,911.58)	(42,328.88)	(39,115.83)	(3,213.05)	(46,939.00)	(4,610.12)	90.18%
	Expenditures	2,894.87	3,911.58	42,328.88	39,115.83	3,213.05	46,939.00	4,610.12	90.18%
	Other Finances	-	-	-	-	-	-	-	#DIV/0!
Total		(0.01)	-	(0.00)	-	0.00	-	(0.00)	#DIV/0!
Total All Business Units	Revenue	(129,957.20)	(83,122.92)	(844,052.26)	(831,229.17)	(12,823.09)	(997,475.00)	(153,422.74)	84.62%
	Expenditures	59,045.67	124,162.66	875,370.07	1,241,626.60	(366,256.53)	1,489,951.92	614,581.85	58.75%
	Other Finances	(14,000.00)	181.89	(14,000.00)	1,818.93	(15,818.93)	2,182.71	16,182.71	-641.40%
Grand Total Parks		(84,911.53)	41,221.64	17,317.81	412,216.36	(394,898.55)	494,659.63	477,341.82	3.50%

Joe Nehmer

From: Joe Nehmer
Sent: Tuesday, September 22, 2015 2:25 PM
To: Loechler, Ann M - DNR (Ann.Loechler@Wisconsin.gov)
Subject: Snowmobile Bridge Inspections

Hi Annie,

I am looking for guidance on snowmobile bridge inspections. Any information you can provide me with would be appreciated. How often are they typically done? How much do they typically cost? Are they eligible for grant funding?

Sincerely,

Joe Nehmer, Director
Jefferson County Parks Department

Joe Nehmer

From: Jeff Koch <jkoch@westbrookeng.com>
Sent: Wednesday, September 23, 2015 8:40 PM
To: Joe Nehmer
Subject: Re: Hubbleton Bridge

Hello Joe.....I'm out west at the ASCE convention, but will check into this number thing. I will call Wheeler and get you an answer.

I'd recommend an inspection on a 5 year cycle as a maximum time span. If something is uncovered in the inspection that may impact the structural integrity of the steel trusses, then we would recommend that this get reduced to 2-years. The DOT has a 2 year inspection cycle for all their bridges, but I don't think we need this level of inspection frequency as the risks are low for a recreational bridge. So every 5 years sounds like a fair value based on the risk factor.

As far as costs, the first one always hurts the most as this is when the majority of the as-built data needs to be cataloged and the initial inspection report needs to be developed. After this, then you just update, add, delete as needed for future inspections.

So based on our experience, \$750 would be a good budget number to get a in-depth inspection based on DOT bridge inspection guidelines, develop a report with photos and recommendations and then put a PE stamp on the whole package and deliver it to you.

Hope this finds you well Joe and enjoying life.....we had a good time working with you and your team.....you guys are good folks!!!

Take care my friend!

Jeffrey J. Koch, P.E.
President / CEO

Westbrook Associated Engineers, Inc.
619 East Hoxie Street / P.O. Box 429
Spring Green, WI 53588
www.westbrookeng.com

608-588-7866 (Office)
608-588-7954 (Fax)
608-963-9373 (Jeff's Cell)

On Tue, Sep 22, 2015 at 9:17 AM, Joe Nehmer <JoeN@jeffersoncountywi.gov> wrote:
Hi Jeff,

I hope this correspondence finds you doing well. I have several questions for you.

1. The bridge has two different numbers on it. One is 09 12672, and on the other end of the bridge it's 09 12670. Why is that?
2. How often should this bridge be inspected?
3. What would be a realistic price for inspection?

Any information you can provide would be appreciated.

Thanks,

Joe Nehmer, Director
Jefferson County Parks Department

Joe Nehmer

From: Loechler, Ann M - DNR <Ann.Loechler@wisconsin.gov>
Sent: Monday, October 05, 2015 9:55 AM
To: Joe Nehmer
Subject: FW: Bridge Inspections
Attachments: DOC013.pdf

Joe, please see the information Cathy has provided on yours and others bridge inspection question.

We are committed to service excellence.

Visit our survey at <http://dnr.wi.gov/customersurvey> to evaluate how I did.

Ann "Annie" Loechler
Phone: (715) 822-2758
Ann.Loechler@wisconsin.gov

From: Burrow, Catherine A - DNR
Sent: Monday, October 05, 2015 9:38 AM
To: Murray, Faith M - DNR; Steffes, Jillian - DNR; Slaminski, Edward M - DNR; Loechler, Ann M - DNR; Ebersohl, Walter A - DNR
Subject: Bridge Inspections

Hi – The question about paying for bridge inspections has come up twice in the past month.

Andy Malecki told me they did a county-wide inspection of bridges in Marinette several years ago and the clubs paid for it out of their maintenance. (He said they grumbled, but did it.)

Dale Mayo provided the following info:

I do a visual inspection of the snowmobile bridges each year. That being said, snowmobile coordinators are not engineers. At my request, Vilas County did hire an engineer to inspect the bridges over a 2 year period in 2008 and 2009. We partnered with the Highway Department who solicited bids and contracted with an engineer to do a thorough evaluation of recreational and highway bridges. Highway bridges are inspected every 2 years. We are considering inspecting the recreational bridges every 10 years unless there are concerns on a particular bridge that would warrant every 5 years. A sample of the inspection process and report is attached, in this particular case the bridge was closed. The cost of the inspections was \$105 per bridge, very reasonable. The snowmobile clubs paid for the inspections because Vilas does not charge for administrative costs and the invoices were submitted as an eligible expense under snowmobile trail maintenance. Let me know if you need any further information at this time or if I can be of further assistance.

It's definitely an eligible expense but if a County is going to pull money off the top of the grant to do it, they should definitely communicate that to their clubs AND shop for a good deal.

Cathy Burrow
Phone: (608) 267-0494
Catherine.Burrow@Wisconsin.gov

From: Burrow, Catherine A - DNR

Sent: Monday, October 05, 2015 9:38 AM

To: Murray, Faith M - DNR; Steffes, Jillian - DNR; Slaminski, Edward M - DNR; Loechler, Ann M - DNR; Ebersohl, Walter A - DNR

Subject: Bridge Inspections

Hi – The question about paying for bridge inspections has come up twice in the past month.

Andy Malecki told me they did a county-wide inspection of bridges in Marinette several years ago and the clubs paid for it out of their maintenance. (He said they grumbled, but did it.)

Dale Mayo provided the following info:

I do a visual inspection of the snowmobile bridges each year. That being said, snowmobile coordinators are not engineers. At my request, Vilas County did hire an engineer to inspect the bridges over a 2 year period in 2008 and 2009. We partnered with the Highway Department who solicited bids and contracted with an engineer to do a thorough evaluation of recreational and highway bridges. Highway bridges are inspected every 2 years. We are considering inspecting the recreational bridges every 10 years unless there are concerns on a particular bridge that would warrant every 5 years. A sample of the inspection process and report is attached, in this particular case the bridge was closed. The cost of the inspections was \$105 per bridge, very reasonable. The snowmobile clubs paid for the inspections because Vilas does not charge for administrative costs and the invoices were submitted as an eligible expense under snowmobile trail maintenance. Let me know if you need any further information at this time or if I can be of further assistance.

It's definitely an eligible expense but if a County is going to pull money off the top of the grant to do it, they should definitely communicate that to their clubs AND shop for a good deal.

Cathy Burrow

Phone: (608) 267-0494

Catherine.Burrow@Wisconsin.gov

CONFIDENTIALITY NOTICE: This e-mail and any files transmitted with it may contain information that is privileged, confidential and exempt from disclosure under applicable laws. The communication is intended for the sole use of the individual or entity to which it is addressed. Dissemination, forwarding, printing, or copying of this e-mail and any files transmitted with it without the consent of the sender is strictly prohibited. If you have received this e-mail in error, please notify the sender, delete the email, and do not use, disclose or store the information it contains. Thank you.

Joe Nehmer

From: Dean Mathwich <deano@tds.net>
Sent: Monday, October 12, 2015 5:01 PM
To: Joe Nehmer
Cc: Kevin Wiesmann; Bob bennett; Jeff Ziebell
Subject: Re: Bridge Inspections

Follow Up Flag: Follow up
Flag Status: Flagged

Hi Joe,

The Bridges were before my time so I have talked to the Trail Boss of the Johnson Creek Club and he does not know of any trail bridge in there area they did not build them self , and I talked to the Trail Boss of the Hubbelton Riders Club about the bridge over the Crawfish River and they are totally inline with having the bridge inspected and maintained, as explained to me the bridge was built for multiple users, snowmobile, fishing, biking and hiking and such. That being said the club is willing to pay a portion of the inspection charge. It would be good thing to add to the agenda of the November meeting that we have set up, the Hubbelton Riders Club will have a representative at the meeting so we can work it out.

Dean

From: "Joe Nehmer" <JoeN@jeffersoncountywi.gov>
To: deano@tds.net
Cc: "Kevin Wiesmann" <KevinW@jeffersoncountywi.gov>, "Mary Nimm" <maryn@jeffersoncountywi.gov>
Sent: Monday, October 5, 2015 1:50:40 PM
Subject: FW: Bridge Inspections

Dean,

We are thinking about inspecting the Hubbleton Bridge and the Johnson Creek Bridge. The firm that designed the Hubbleton structure suggests inspection every 5 years. It is now 6 years old. What are your thoughts?

Joe

From: Loechler, Ann M - DNR [<mailto:Ann.Loechler@wisconsin.gov>]
Sent: Monday, October 05, 2015 9:55 AM
To: Joe Nehmer
Subject: FW: Bridge Inspections

Joe, please see the information Cathy has provided on yours and others bridge inspection question.

We are committed to service excellence.

Visit our survey at <http://dnr.wi.gov/customersurvey> to evaluate how I did.

Ann "Annie" Loechler
Phone: (715) 822-2758
Ann.Loechler@wisconsin.gov

Joe Nehmer

From: Joe Nehmer
Sent: Friday, October 23, 2015 8:33 AM
To: 'Dean Mathwich'
Cc: Mary Nimm; Kevin Wiesmann
Subject: RE: Bridge in Johnson Creek

Hi Dean,

It's immediately west of SH 26 over Johnson Creek next to the mobile home park. It was built by club members. It was also built with snowmobile dollars from the DNR.

Does this information help?

Joe

-----Original Message-----

From: Dean Mathwich [<mailto:deano@tds.net>]
Sent: Friday, October 23, 2015 6:27 AM
To: Joe Nehmer
Subject: Bridge in Johnson Creek

Hey Joe

I have been talking to lots of people about witch bridge in the Johnson Creek trail system that some body besides the local club would have built and still don't know witch bridge it is that needs inspection please advise me of its location so I can talk to the right club members about it before the Nov. meeting.

Thanks Dean

Joe Nehmer

From: Dean Mathwich <deano@tds.net>
Sent: Wednesday, November 04, 2015 6:59 AM
To: Joe Nehmer
Cc: Mary Nimm; Kevin Wiesmann
Subject: Meeting Agenda

Hi Joe I hope we can add to the agenda of the meeting next week the payment question of the bridge inspections, I invited a member of each club that those bridges are on there trail systems so they will know first hand what is going on because I do not have the power to make them pay the bill. So when we get there ok we should be all set.

Thanks Dean

From: [Dean Mathwich](#)
To: [Mary Nimm](#)
Subject: Re: JC Bridge
Date: Monday, November 30, 2015 7:03:32 AM

Hi Mary the alliance members did not think much of my proposal on the 3 way division of costs they feel if the county wants the bridges inspected they should step up and pay for it so hopefully when Joe brings it up at the meeting they will decide to pay the cost so the club members will feel more supported by the county. Thanks Dean

From: "Mary Nimm" <maryn@jeffersoncountywi.gov>
To: "Dean Mathwich" <deano@tds.net>
Cc: "Joe Nehmer" <JoeN@jeffersoncountywi.gov>, "Kevin Wiesmann" <KevinW@jeffersoncountywi.gov>
Sent: Thursday, November 19, 2015 3:47:46 PM
Subject: RE: JC Bridge

Dean,

Please confirm the outcome of the alliance meeting and what I am asked to take forward to the Parks Committee in December for both bridges.

Mary

From: Dean Mathwich [<mailto:deano@tds.net>]
Sent: Wednesday, November 18, 2015 4:05 PM
To: Mary Nimm
Cc: Joe Nehmer; Kevin Wiesmann
Subject: Re: JC Bridge

Joe was going to see if the county board would approve paying a portion of it I thought, we did not talk about this but I was going to bring up to night at the alliance meeting what if the alliance paid 1/3 and the club paid 1/3 and see if the county would pay 1/3 of both bridge inspection costs that seems fair to me?

Dean

From: "Mary Nimm" <maryn@jeffersoncountywi.gov>
To: "Dean Mathwich" <deano@tds.net>
Cc: "Joe Nehmer" <JoeN@jeffersoncountywi.gov>
Sent: Wednesday, November 18, 2015 1:47:21 PM
Subject: JC Bridge

Dean,

Please refresh my memory... what was the decision on the inspection of the JC Bridge?

Sincerely,

Mary S. Nimm





Crawfish River County Park

26

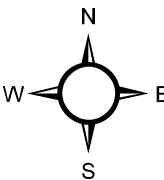
J

W

Snowmobile Crossing the Glacial River Bike Trail

-  Snowmobile crossing Glacial River Trail
-  Snowmobile Trail on Glacial River Trail
-  Glacial River Trail
-  Crawfish River Co. Park

600 300 0 600 Feet





Division of Transportation Services
 Southwest Region - Madison
 2101 Wright Street
 Madison, WI 53704

Scott Walker, Governor
 Mark Gottlieb, P.E., Secretary
 Internet: www.dot.wisconsin.gov

Telephone: (608) 246-7548
 Facsimile (FAX): Area Code- FAX #

E-mail: Mark.vesperman@dot.wi.gov

January 25, 2011

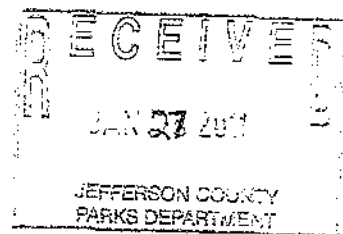
ATTN: JOE NEHMER
 JEFFERSON COUNTY PARKS DIRECTOR
 320 SOUTH MAIN STREET
 JEFFERSON, WI 53549

Dear Mr. Nehmer,

Enclosed for your records is copy of the signed agreement for the maintenance of the bike path that will be constructed this year along the east side of the highway 26 bypass from CTH W to USH 18.

Sincerely,

Mark Vesperman
 Wisconsin DOT Project Manager
 Southwest Region – Madison office



AGREEMENT BY AND BETWEEN THE WISCONSIN DEPARTMENT OF
TRANSPORTATION AND JEFFERSON COUNTY FOR THE MAINTENANCE OF THE
BICYCLE /PEDESTRIAN PATH
WITHIN THE RIGHTS-OF-WAY OF STATE HIGHWAY 26

This AGREEMENT is made and entered into this 22nd day of November, 2010, by and between Jefferson County Wisconsin, hereinafter called the "County", and the STATE OF WISCONSIN, Department of Transportation, hereinafter called the "State".

WITNESSETH:

WHEREAS, the State and County have agreed to the development of bicycle/pedestrian paths, hereinafter called the "Path". There are three path locations that are shown on the attached drawing and described as follows:

The first location starts at the south Jefferson County Line and extends northerly 0.3 mile along the west side of State Highway 26 until it connects to the existing Glacial River Trail. This section of path replaces an existing section of the trail and a trailhead parking area that conflicts with the highway improvements.

The second location starts at the intersection of Rita Lane and Business 26 to the north side of the city of Fort Atkinson and runs northerly along the east side of new Highway 26 for 2.7 miles to County Highway W on the southwest side of the city of Jefferson. The north 0.6 mile of the path runs on property that is owned by Jefferson County.

The third location starts at the intersection of Baneck Lane and Highway 26 and runs northerly along the west side of the said highway 2.5 miles where it connects to the south end of High Road.

Said paths includes an area approximately 4 feet on each side of the Path plus any drainage pipes and structures constructed for the Path. (See attached location maps.)

WHEREAS, within said limits the initial construction of the path and appurtenances will be financed and completed by the State in cooperation with the County.

WHEREAS, Wis. Stat. Sec. 66.0301 authorizes municipalities, including the County and the State, to contract with one another for the receipt or furnishing of services or the joint exercise of any power or duty required or authorized by law.

AGREEMENT:

NOW, THEREFORE, the County and the State, in consideration of the mutual covenants herein set forth, and other good and valuable considerations, the receipt of which is hereby acknowledged, agree to make this Intergovernmental Agreement under Wis. Stat. sec. 66.0301 for the purposes stated herein, as follows:

1. Path Location. The paved Path general limits are as described above in the first "Whereas" paragraph and shown on the attached exhibits.

2. **Path Construction.** The Path shall consist of a ten-foot asphaltic paved surface (2" thick) on 6" of crushed gravel with two-foot turf shoulders generally within the STH 26 Right-of-Way. The initial construction of the path will be financed and completed by the State.
3. **Path Lighting.** None. The County shall be responsible for the financing, maintenance, rehabilitation and replacement of any Path Lighting.
4. **Path Signing.** Within the said limits any required signage will be financed and installed by the State. Any additional desired signing, as approved by the state, shall be provided and financed by the County and installed during initial construction by the State.
5. **Path Maintenance.** The County shall maintain the Path, at its own expense. For purposes of this agreement, maintenance shall mean keeping all existing surfaces, signing and marking in good repair; repair of damage due to unauthorized use, vandalism, graffiti or theft; removing dirt and debris from the path surface; removing litter from the paved surface and nearby adjacent grassed areas; mowing grass areas; keeping any other landscaping in healthy and neat condition; keeping all drainage ditches in good working condition; and keeping drainage structures free of debris and in good repair. The County shall be responsible for any other maintenance needs that are not listed above and within the Path corridor. Winter maintenance shall be at the discretion of the County.
6. **Use of Path.** The use of the Path by the County shall be for bicycle and pedestrian transportation and may also include public access for recreational activities, including bicycling, pedestrian use and skating, as defined in Wis. Stat. sec. 895.52.
7. **Prohibition of Motorized Vehicles.** Use of this Path by motorized vehicles of any type, except as needed for maintenance, rehabilitation or emergency rescue purposes, or under Paragraphs 10 and 14 herein, is prohibited, except for motorized wheelchairs. The Town/Village/City at its discretion may prohibit electric personal assistive mobility devices, as defined in state statute 340.01 (15mph).
8. **Path Corridor Encroachments.** The County shall be responsible for keeping the Path corridor right-of-way free of encroachments.
9. **Path Fees.** The County shall not charge fees for the use of the Path.
10. **Removal of Equipment.** All Path signs, lighting and appurtenances, which remain the property of the County, shall be removed by the County, at its own expense, upon termination of the Maintenance Agreement.
11. **Enforcement.** Promulgation and enforcement of noise, littering and loitering restrictions and the prohibition of motorized vehicles on and along the Path and shall be the sole responsibility of the County. The County may pass such ordinances and resolutions as it deems appropriate to govern these restrictions on the Path, and may use such methods as it deems appropriate to assure compliance with said restrictions. Any other restrictions proposed by the County shall require written concurrence from the State.
12. **Liability.** The County commits itself to assuming full responsibility for the management of the Path and all transportation and recreation operations thereon, and for any legal liability arising out of any of its own acts or omissions relating to its occupation, management, maintenance or transportation and recreational use of the Path, to the extent provided by law.
13. The County and State agree to conduct their activities along and on the Path so as not to endanger any person or property thereon. The parties agree that each party shall be responsible for its own acts or omissions and those of its officers, employees and agents, and those of its boards, commissions, agencies and officials, if any; and shall be responsible for

any loss or expense (including costs, damages and attorney fees) by reason of liability imposed by law, attributable to such acts or omissions to the extent provided by law.

14. **Wisconsin Department of Transportation (WisDOT) Property Rights.** This Agreement is not a lease and does not convey or transfer any ownership or rights of ownership in WisDOT right-of-way to the County. This instrument is a permit and the extent of the permit is to allow the use of the Path temporarily for certain activities as set forth herein. The State retains all rights of property ownership, and only the State can grant an invasion of said ownership rights.
15. The State retains the authority for the issuance of permits to allow a public or privately owned utility the right to construct, operate, and maintain a utility facility over, across, upon, and within WisDOT right-of-way. If a permit is issued under this paragraph, it shall be a condition of the permit that use of the right-of-way needed for the Path shall not be impaired, the utility permittee shall repair said right-of-way and return it to its pre-existing condition, normal wear and tear considered, as soon as possible.
16. The State shall provide the County with written notice prior to the issuance of any permit under this paragraph, and shall coordinate with the County on matters pertaining to utility permit applications.
17. The State retains full and final authority regarding the sale or disposal of the right-of-way or any portions thereof. Furthermore, this Agreement is subject to existing permits.
18. The State retains the right to close all or any portion of the Path at any time if it needs the right-of-way for future highway improvements or other operational needs, without compensating the County to relocate the Path should the County decide to do so.
19. **Term.** The term of this Maintenance Agreement shall be twenty (20) years from the effective date written above. This Agreement shall automatically be renewed under the same terms and conditions for additional one (1) year terms, unless either party shall give written notice to the contrary to the other party at least ninety (90) days before the renewal date.
20. **Applicability.** If any term, covenant, condition, or provision (or part thereof) of this Agreement, or the application thereof to any part or circumstance, shall at any time or to any extent, be held invalid or unenforceable, the remainder of the Agreement, or the application of such term or provision (or remainder thereof), to parties and circumstances other than those as to which it is held to be invalid or unenforceable, shall not be affected thereby, and each term, covenant, condition and provision of this Agreement shall be valid and enforced to the fullest extent permitted by law.
21. **Changes.** No term or provision of this Agreement, or any of its attachments, may be changed, waived, discharged, or terminated orally, but only by an instrument in writing signed by all parties to this Agreement. Consents and approvals required under this instrument may be made or granted by exchange of letters between the parties.
22. **Non-Discrimination.** The parties agree to abide by their own respective non-discrimination policies and procedures during the term of this agreement. Further, the parties agree that this agreement does not subject either party to the other's jurisdiction for the administration of such matters.
23. **Entirety.** The Agreement together with any documents referred to herein contain the entire Agreement of the parties and supersedes any and all prior Agreements and draft Agreements, or oral understandings between the parties regarding the Path.

24. Notices. Any notice required to be made in writing or any filing required to be made with any party to this Agreement shall be sent to the following addresses:

For the State:

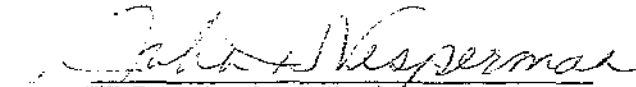
Planning Chief
WisDOT Southwest Region
2101 Wright Street
Madison, WI 53704

For the County:

Joe Nehmer, Jefferson County Parks Director
Jefferson County Courthouse
320 South Main Street
Jefferson, WI 53549

IN WITNESS WHEREOF, the parties hereto have executed this Agreement effective as of the day and year first above written.

WISCONSIN DEPARTMENT OF TRANSPORTATION, STATE OF WISCONSIN:



WisDOT Southwest Region Director
Joseph Olson, P.E.

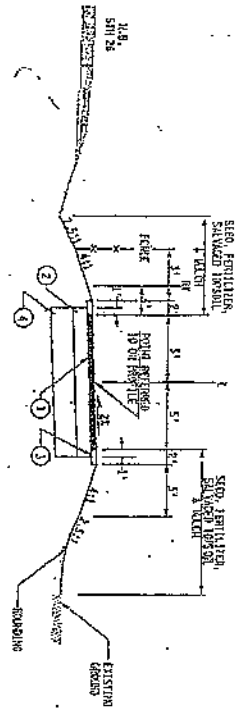
1/20/2011
Date:

JEFFERSON COUNTY, WISCONSIN:

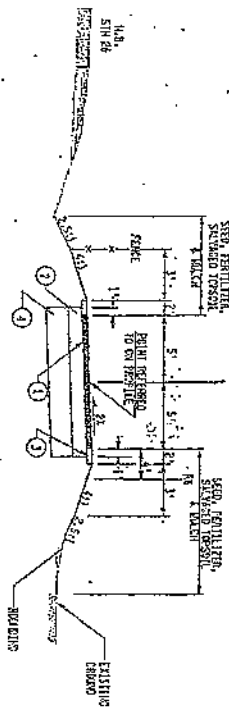
Approval By: County Administrator ^{COUNTY} ADMINISTRATOR 1-5-11
Jefferson County Title Date

Approval By: _____
Jefferson County Title Date

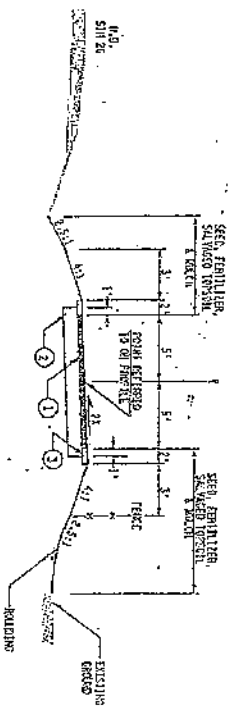
Approval By: _____
Jefferson County Title _____ Date



TYPICAL FINISHED SECTION
MULTI-USE PATH
STA. 48112.4996 TO STA. 48112.9996



TYPICAL FINISHED SECTION
MULTI-USE PATH
STA. 51160.4996 TO STA. 51160.9996



TYPICAL FINISHED SECTION
MULTI-USE PATH
STA. 53241.8192

PROJECT NUMBER: 1390-04-98
 COUNTY: JEFFERSON
 HWY: STA 26
 SHEET
 10/11/08
 10/11/08
 10/11/08

